

# BEELER GALLERY

at Columbus College of Art & Design

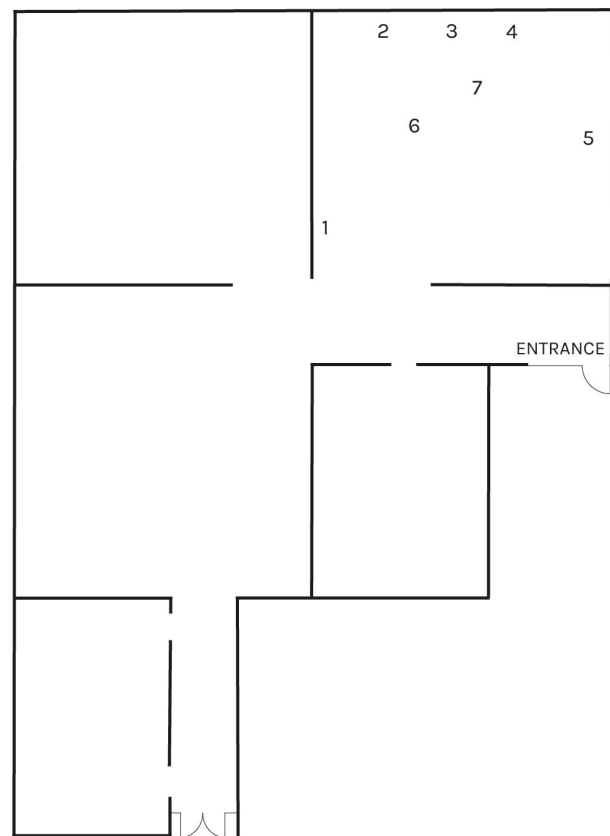
*arms ache avid aeon*  
**Nancy Brooks Brody / Joy Episalla / Zoe Leonard / Carrie Yamaoka**  
*fierce pussy amplified*  
Oct 2, 2018 – March 17, 2019

## Chapter Three 1/18/19 – 2/10/19

### Room A

(Clockwise from left)

- 1 Carrie Yamaoka  
*imaimiami*  
1991  
Sandblasted glass mirror and wood frame  
26 x 34 in
- 2 Carrie Yamaoka  
*Archipelagoes, Panel #14*  
1991-94  
18 chemically altered unique gelatin silver prints  
20 x 16 in, 10 x 8 in
- 3 Zoe Leonard  
*Mirror no. 1 (Metropolitan Museum)*  
1990  
Gelatin silver print  
43 x 30 1/4 in  
  
© Zoe Leonard  
Courtesy the artist, Hauser & Wirth and  
Galerie Gisela Capitain, Cologne.
- 4 Joy Episalla  
*Dreams & Ghosts. Freud's Bookcase.*  
*London.*  
2011  
Archival pigment print mounted to plexiglas  
22 x 37 x 1 in
- 5 Nancy Brooks Brody  
*Frankenstein*  
ca. 1996  
Gouache and pencil on paper  
30 1/4 x 22 1/2 in
- 6 Nancy Brooks Brody  
*Platform Shoes*  
2000  
Shoes, resin, carpet, carpet padding, plywood,  
wood joist, concrete, gravel, dirt  
26 1/2 x 9 x 4 1/2 in

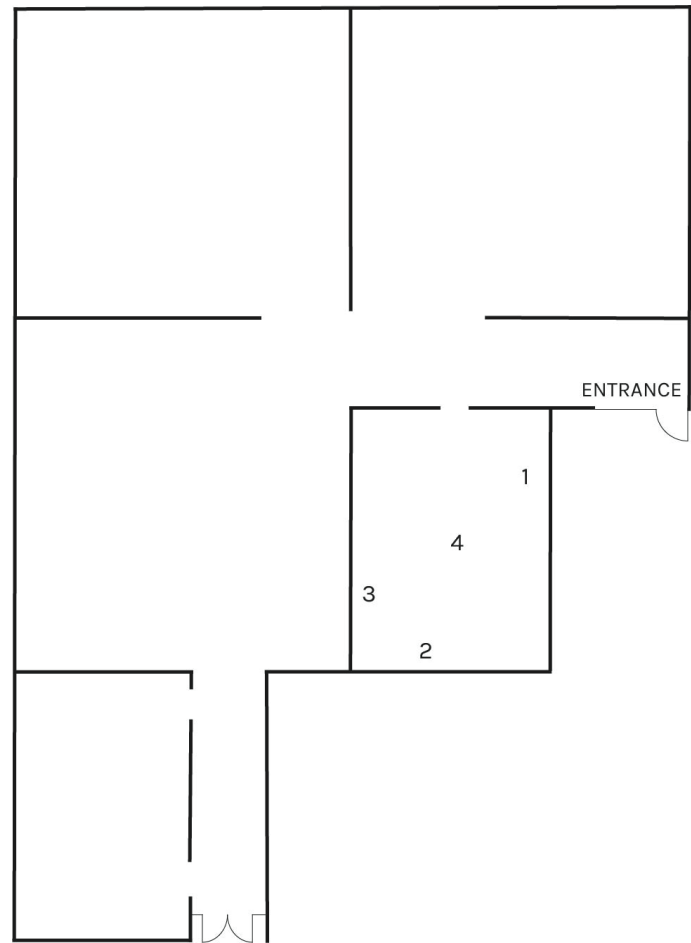


- 7 Joy Episalla  
*foldtogram (35'2.5" x 44 – August 2018)*  
2018  
Photogram, silver gelatin mutigrade  
matte RC roll paper  
35 ft 2 1/2 in x 44 ft x 2 in

## Room B

(Clockwise from left)

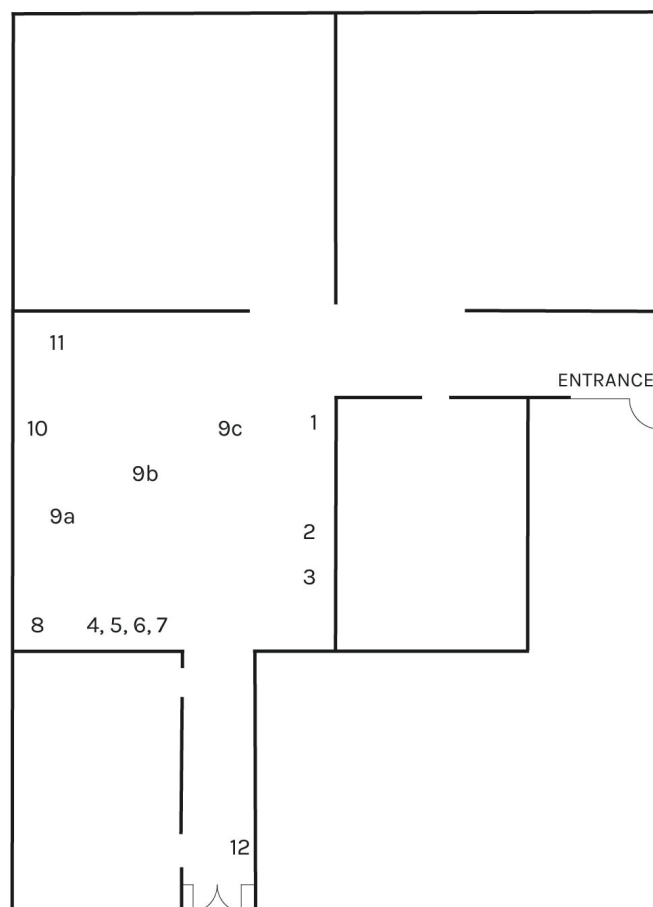
- 1 Joy Episalla  
*Skin 7*  
2001-2018  
Cotton, wood  
18 x 12 x 2 in
  - 2 Carrie Yamaoka  
*40 by 40 (green bubble)*  
2011  
Reflective mylar, urethane resin and mixed  
media on wood panel  
40 x 40 in
  - 3 Zoe Leonard  
*View from Below, Geoffrey Beene  
Fashion Show*  
1990  
Gelatin silver print  
26 3/8 x 36 3/4 in
- © Zoe Leonard  
Courtesy the artist, Hauser & Wirth and  
Galerie Gisela Capitain, Cologne.
- 4 Nancy Brooks Brody  
*35 Shells*  
2002-2018  
Enamel on *polinices duplicatus*  
Dimensions variable



## Room C

(Clockwise from left)

- 1** Carrie Yamaoka  
*deep blue down*  
2011  
Mixed media on reflective mylar  
73 ½ x 48 in
- 2** Nancy Brooks Brody  
*Torn and Sewn*  
2005  
Thread and paper  
16 x 32 in
- 3** Nancy Brooks Brody  
*Torn and Sewn*  
2005  
Thread and paper  
16 x 32 in
- 4** Joy Episalla  
*foldtogram (44 x 50, 8-17-18)*  
2018  
Photogram, silver gelatin multigrade  
glossy RC paper  
44 x 50 x .5 in
- 5** Joy Episalla  
*foldtogram (44 x 60, 8-17-18)*  
2018  
Photogram, silver gelatin multigrade  
matte RC paper  
60 x 44 in
- 6** Joy Episalla  
*foldtogram\_lgrc3\_\_DSC6014*  
2017  
Photogram, silver gelatin multigrade glossy RC paper  
55 x 42 x .5 in
- 7** Joy Episalla  
*foldtogram (P-BLK-August-44-x 60)*  
2018  
Photogram, silver gelatin multigrade glossy RC paper  
44 x 63 x .5 in
- 8** Carrie Yamaoka  
*90 by 7 + 30 by 11.25*  
2004  
Cast flexible urethane resin, reflective mylar, mixed media  
90 x 7 in, 30 x 11.25 in
- 9a** Nancy Brooks Brody  
*SoapStack 4*  
2008-2018  
Soap on painted wood base  
9 ½ x 4 ½ x 6 in



**9b** Nancy Brooks Brody  
*SoapStack 6*  
2008-2018  
Soap on painted wood base  
9 1/2 x 4 1/2 x 6 in

**9c** Nancy Brooks Brody  
*SoapStack 7*  
2008-2018  
Soap on painted wood base  
9 1/2 x 4 1/2 x 6 in

**10** Zoe Leonard  
*Beheaded Model, Carolyn Roehm Fashion*  
1990  
Gelatin silver print  
22 7/8 x 32 1/2 in

© Zoe Leonard  
Courtesy the artist, Hauser & Wirth and  
Galerie Gisela Capitain, Cologne.

**11** Joy Episalla  
*Removed (3 channel)*  
2001-2002  
3-channel video  
Dimensions variable

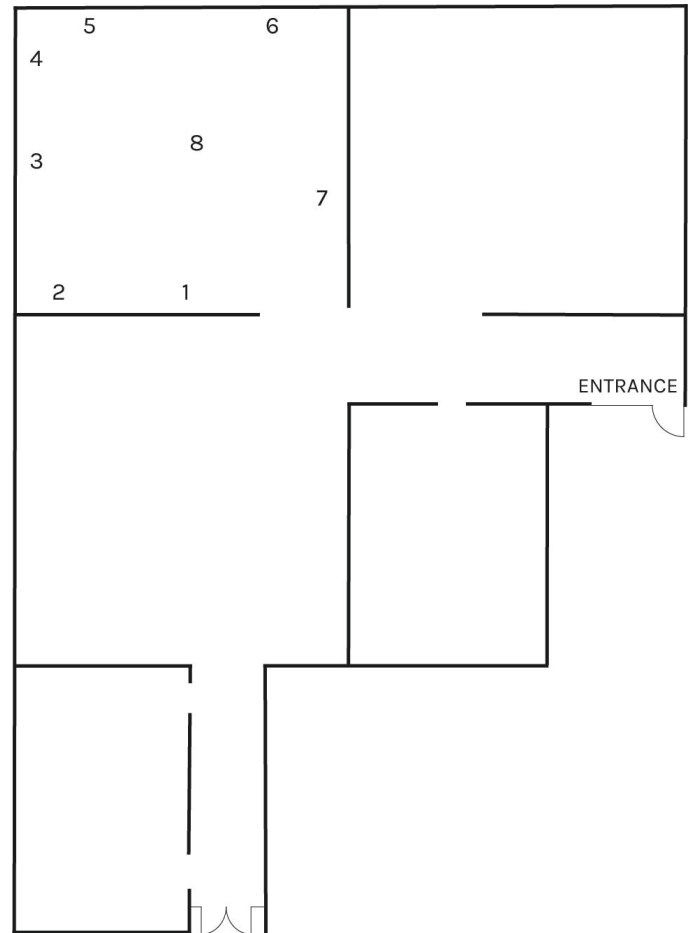
(Exit)

**12** Carrie Yamaoka  
*A is for Angel*  
1991  
Letraset and rubber cement on vellum  
17 x 14 in framed

## Room D

(Clockwise from left)

- 1** Nancy Brooks Brody  
*NY Times Obituary*  
2001  
Gouache and pencil on NY Times obituary page  
12 x 13 in
- 2** Carrie Yamaoka  
*Three*  
2011  
Mixed media on reflective mylar  
52 x 50 x 4 in
- 3** Nancy Brooks Brody  
*West/South, 90° Line*  
2018  
Metal embedded into sheetrock wall  
20 ft x 1 ¼ in
- 4** Nancy Brooks Brody  
*4" Circle*  
2018  
Enamel on metal embedded into sheetrock wall  
4 in diameter
- 5** Zoe Leonard  
*Frontal View, Geoffrey Beene Fashion Show*  
1990  
Gelatin silver print  
46 ¼ x 32 ¾ in  
  
© Zoe Leonard  
Courtesy the artist, Hauser & Wirth and  
Galerie Gisela Capitain, Cologne.
- 6** Nancy Brooks Brody  
*West/South, 90° Line*  
2018  
Metal embedded into sheetrock wall  
20 ft x 1 ¼ in
- 7** Nancy Brooks Brody  
*North/South, 10° Line Removed*  
2018  
16 ft x 1 ¼ in
- 8** Joy Episalla  
*Removed (5 parts)*  
2001-2002  
Cotton batting, polyester, wood, metal  
Each: 30 x 24 x 32 in



**fierce pussy**

Please see information in the gallery.

